
Brookside Park



Address: 10000 Xerxes Avenue S.

Classification: Neighborhood Park

Size: 4.47 Acres water area

18.03 Acres land area

22.5 Total acres

Existing Features:

- A Playground equipment
- B Park building
- C 2 Tennis courts
- D 4 Soccer fields
- E 1 Volleyball court
- F Lighted hockey rink
- G Lighted general skating rink
- H Off-street parking
- I 1 Softball diamond

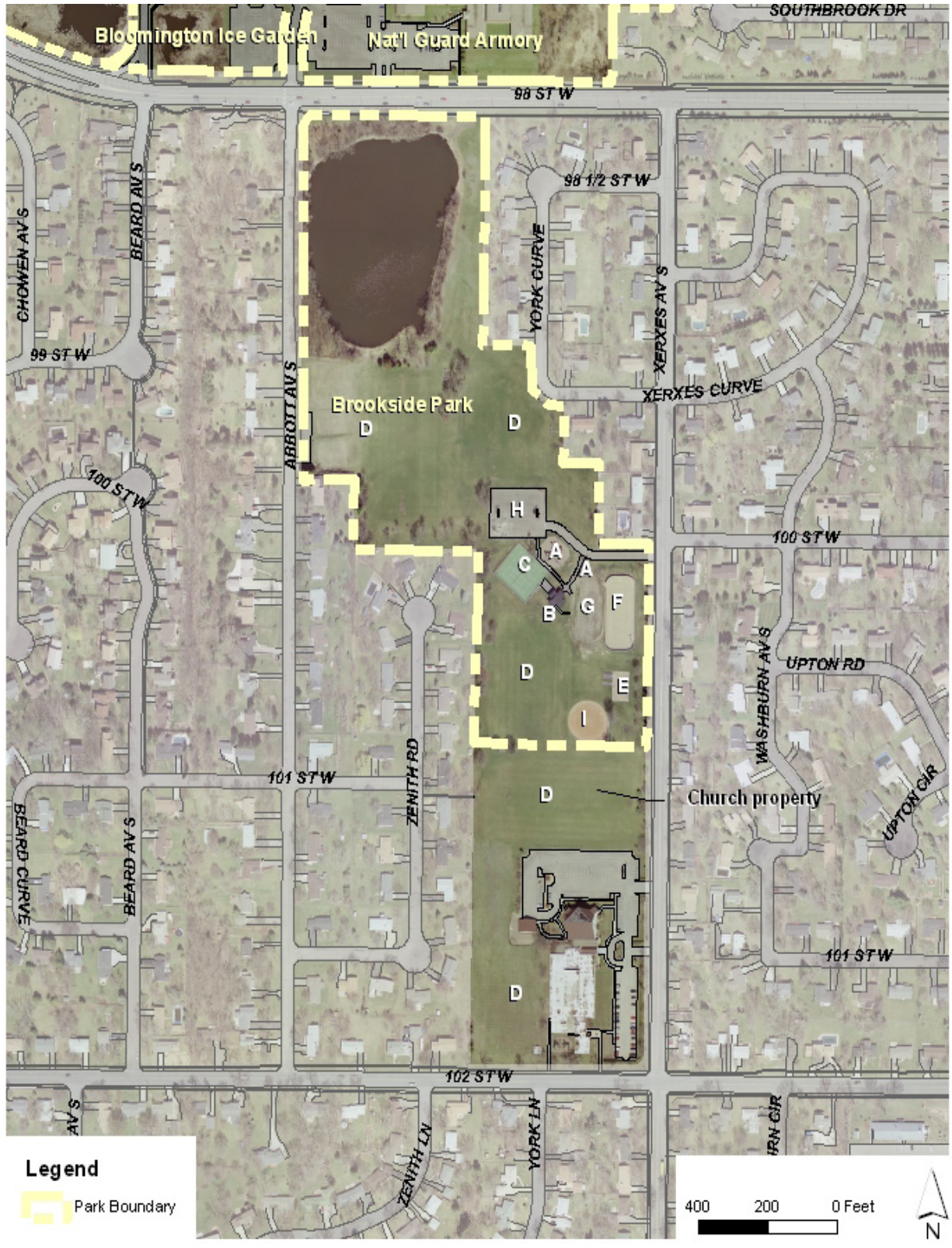
Planned Facility and Improvements:

- New playground equipment
- Remove skinned infield on softball field
- Permeable overflow parking area
- Pave hockey rink and replace boards
- Renovate park building with restroom timer locks
- Improve lighting for security
- Add field with irrigation on adjacent church property

Accessibility Recommendations:

- Accessible path to tennis courts, soccer fields & volleyball court
- Upgrade playground for safety and accessibility

Brookside Park Existing Conditions



Brookside Park Master Plan

