

---

# Marsh Lake Park



Address: *9000 France Avenue S.*

Classification: Conservation Area

Size: 306.77 Acres water area

171.18 Acres land area

477.95 Total acres

**Existing Features:**

- A Trails
- B Archery range
- C Off-street parking

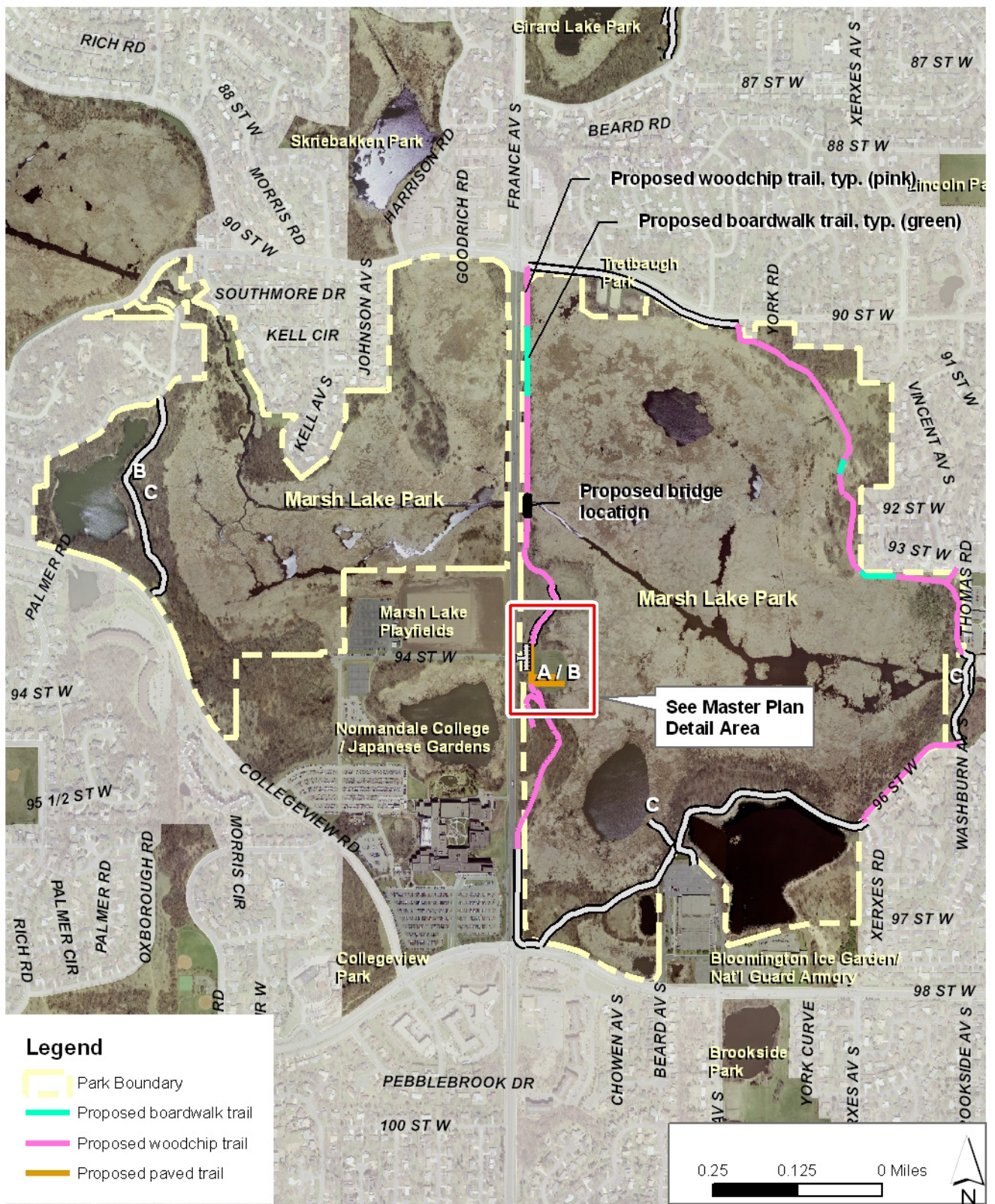
**Planned Facilities and Improvements:**

- Woodchip/boardwalk trail around Marsh Lake
- Scenic overlook south of archery range
- Accessible path and archery
- Pave parking lot

**Accessibility Recommendations:**

- Accessible parking lot striping and signage in parking lot
- Accessible paths to archery range from parking lot

# Marsh Lake Park Existing Conditions



# Marsh Lake Park Master Plan

